

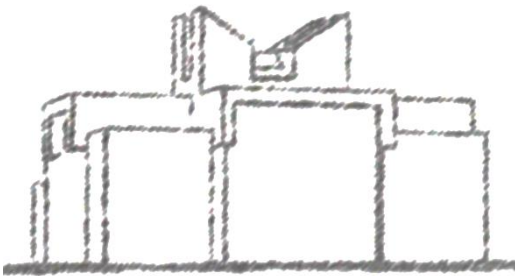
INTER
ALIOS.



The Joint Choir of Churchill
and Murray Edwards Colleges

The Chapel at Churchill

Michaelmas 2024



Chapel Services

and

Music & Words



Thursday 10th

Chapel at Churchill Rehearsal Trials

October

Open to anyone who would like to try out singing in the choir

5-6:30pm

Rehearsal Trials FDR in Murray Edwards

Sunday 13th

Open to anyone who would like to try out singing in the choir

October

Imogen Holst Hymne to Christ

4-6pm

Stef Conner This Sceptered Isle

Thomas Tallis Out of the Deep

Sunday 20th

Chapel at Churchill Evensong

October

What might be the tasks of The Chaplain,
this chapel? The Rev'd Canon Nigel Cooper
Followed by supper with the Chaplain*

5:45pm

EVENING CANTICLES Stanford in B-flat

PRECES & RESPONSES Joanna Forbes L'Estrange

ANTHEM *Hymne to Christ* Imogen Holst

PSALM 23, Walford Davies

Music & Words Dome, Murray Edwards College

Sunday 27th

Dr Sean McEvoy The play's the Thing

October

Imogen Holst *Hymne to Christ*

5:45pm

Maria Hester Park *Under the greenwood tree*

Peter Sculthorpe *Autumn Song*

Stef Conner *This Sceptered Isle*

Vaughan Williams *Come away death*

Sunday 3rd

Chapel at Churchill Evensong

November

Is there a conversation to be The Chaplain
had between religion and
science, or is it all one-way?

5:45pm

Followed by supper with the Chaplain*

Introit *Duo Seraphim* Victoria

EVENING CANTICLES Joanna Forbes L'Estrange

PRECES & RESPONSES Joanna Forbes L'Estrange

ANTHEM *The Hills* John Ireland

PSALM 19, Lucy Currid

| | | |
|---------------------------------------|-------------------------------------|-------------------------------|
| Music & Words | Dome, Murray Edwards College | Sunday 10th |
| Prof. Alex Piotrowski | Molecules to Mountains | November |
| Featuring paintings by Geoffrey March | | 5:45pm |
| John Ireland | <i>The Hills</i> | |
| Madelana Casulana | <i>O notte, O cielo, O mar</i> | |
| Charles Hubert Parry | <i>There rolls the deep</i> | |
| Thomas Tallis | <i>Out of the Deep</i> | |
| Fleetwood Mac, | <i>Landslide</i> | |
| arr. Mary Anne Muglia | | |

| | | |
|-------------------------------|------------------------------------|--|
| Sunday 17th | Chapel at Churchill | Evensong |
| November | Angels in the Architecture? | Dr Nigel Walter FRIBA, FRSA; |
| 5:45pm | How Buildings Shape Worship | Director, Archangel Ltd |
| | INTROIT | <i>Karitas habundat</i> Hildegard von Bingen |
| | EVENING CANTICLES | Herbert Howells (Col. Regale) |
| | PRECES & RESPONSES | Joanna Forbes L'Estrange |
| | ANTHEM | <i>Tantum Ergo</i> Mel Bonis |
| | PSALM | 84, Lucy Che |

| | | |
|------------------------------|--|-------------------------------|
| Music & Words | Dome, Murray Edwards College | Sunday 24th |
| Prof. Miranda Griffin | Clear Blue Water: Some Reflections from Medieval Literature | November |
| | | 5:45pm |
| Hildegard von Bingen | <i>Karitas habundat</i> | |
| Guillame de Machaut | <i>Kyrie</i> | |
| Mel Bonis | <i>Tantum Ergo</i> | |
| Josquin de Prez | <i>Nymphes Nappes</i> | |
| Francis Poulenc | <i>Ave verum corpus</i> | |

| | | |
|------------------------------|--|------------------------------|
| Sunday 1st | Chapel at Churchill | Advent Carols Service |
| December | A service of choral and congregational carols and readings followed by mince pies. | |
| 5:45pm | | |

| | | |
|--|--|--------------------------------|
| Advent Carol Service | Library, Murray Edwards College | Saturday 7th |
| A performance of choral and congregational carols and readings followed by mince pies. | | December |
| | | 4pm |

* *Suppers with the Chaplain*. Everyone is welcome to come, but you will need to book in advance either by the form sent to choir members or by emailing the chaplain direct. These are an opportunity to eat a free college meal together and to talk about anything and everything, perhaps even that evening's sermon topic.

The Chapel at Churchill

The Chapel at Churchill is an inclusive and welcoming space. All services are free and open to everyone regardless of creed or college membership. Tea and cakes are served before services at which the choir sings, and there is often sufficient to finish off after the service. When the choir are not present, there is a said evening service at 5.45pm in termtime.

Members of Churchill can access the chapel for quiet contemplation or prayer using their own room key. There are easy chairs and a bookshelf on diverse religions and beliefs. However, the chapel can also be booked for music practice and other agreed activities via the chapel website.

For queries about the Chapel or services please contact:

The Chaplain – The Rev'd Canon Nigel Cooper, nsc47@cam.ac.uk

Chair of the Chapel Trust – Dr Martyn Johnson, maj1@cam.ac.uk

Inter Alios Choir

The Inter Alios choir perform every Sunday of term, alternating between an Anglican Evensong and a unique 'Music & Words' event which combines choral music, poetry and a short address. 'Inter Alios' translates as 'among others' and speaks to the collective spirit of the choir: inter-faith, inter-collegiate, and international. In our programming we seek to juxtapose well-known choral works with contemporary repertoire, particularly music by women composers.

The choir welcomes singers with a wide range of experience. Anyone can try out singing in the choir at our **Rehearsal Trials** on Thursday 10th and Sunday 13th October. Apart from these trial sessions, our members are mostly un-auditioned, but we have an auditioned Chamber Choir including Choral Scholars at our core. Choral Scholars take on a leadership role within the choir and are supported with vocal lessons. For all enquiries relating to joining the choir please contact:

Director of Music – Dr Ewan Campbell, eahc2@cam.ac.uk

Organ Scholar – Jerry Lin

Assistant Conductor – Lucy Che

| | | |
|-----------|---------------|-------------------------|
| Thursdays | 5:30 – 6:30pm | Full Choir Rehearsal |
| | 6:30 – 7:30pm | Chamber Choir Rehearsal |
| Sundays | 4:00 – 5:30pm | Full Choir Rehearsal |
| | 5:45 – 7pm | Services/Performances |