



# SUSTAINABLE ISLAND LIVING





# SUSTAINABLE ISLAND LIVING

*Take a good look at this island. What are some things you notice that might be different from where we live?*





# ENERGY

*Can you spot how this place might be generating its own energy? What do you see?*





# TRANSPORTATION

*Look at the ways people might be getting around. What modes of transportation do you think people living on the island are using?*





# FOOD PRODUCTION

*Where do you think the  
people on this island get  
their food?*





# **BUILDING & HOUSING**

*How do the homes and buildings here look different? What materials or designs are they using that helps the environment?*





# WATER USE

*Water is precious. What are some ways this island might be using or saving water?*





# COMMUNITY AREAS

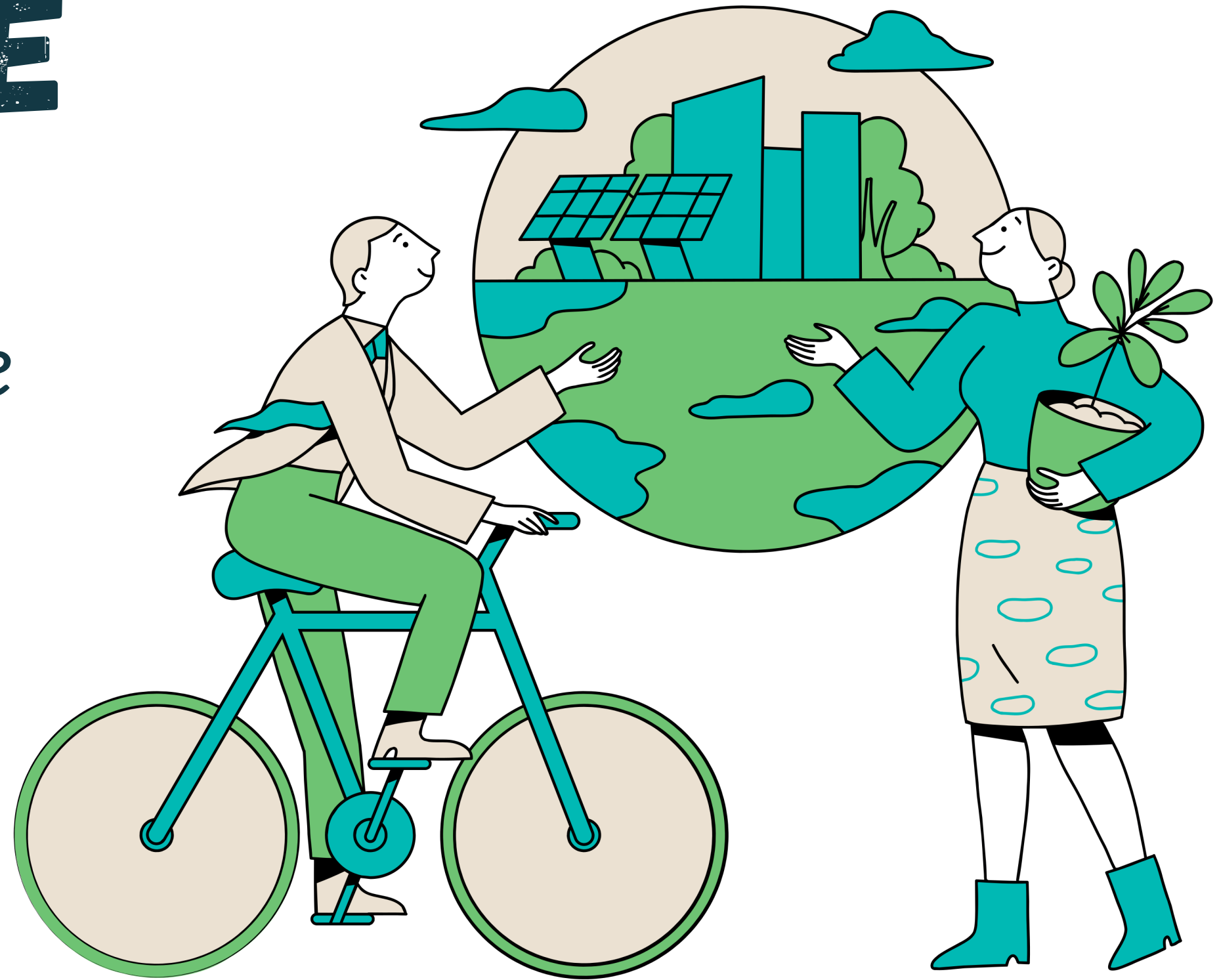
*What kinds of community spaces or areas can you see? How do these spaces encourage a sustainable lifestyle?*





# SUSTAINABLE LIVING

*How could we apply some of these sustainable solutions in our own community?*







# PICTIONARY


## OBJECTIVE

- Guess the sustainability- related term being drawn

## RULES

- One student draws; others guess
- No letters, numbers or verbal hints
- Each round is 1 minute
- Correct guess = 1 point

## WINNING

- The team with the most points at the end of the game wins!
- 





# YOUR SUSTAINABLE ISLAND


## OBJECTIVE

- Collaboratively design an island with sustainable practices

## RULES

- Stay on topic
- Work with your team
- Stick to the time
- Your drawings don't need to be perfect, they just need to explain your ideas!

## MISSION

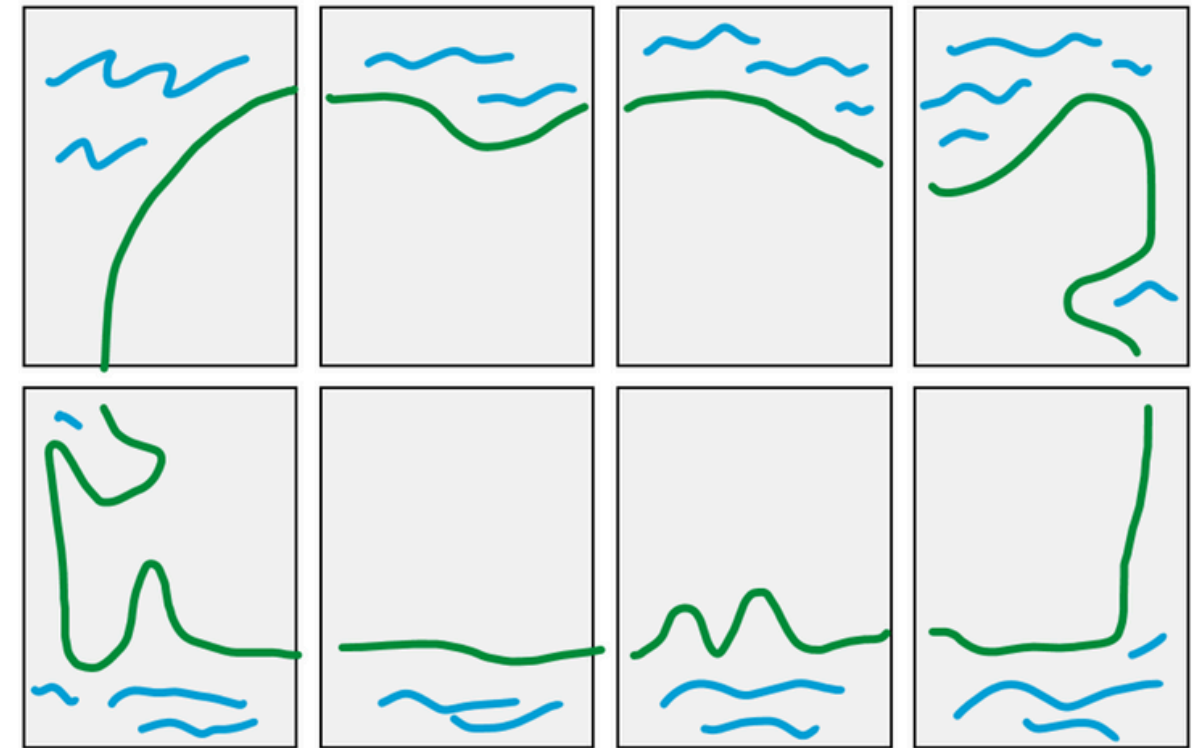
- Form teams and assign roles
  - You have 10 minutes to draw your part of the island
  - Assemble the drawings to form one island!
- 



# DESIGNING YOUR ISLAND:

## STEP ONE

- Put your team's pieces of paper together and draw an island outline - just like this!
- It can be any shape you like





# DESIGNING YOUR ISLAND:

## STEP TWO

- Decide as a team on a cool name for your island
- You also need to decide what the weather and geography will be like.
  - Will it be hot or cold?
  - Mountains, woods or something else?





# DESIGNING YOUR ISLAND: STEP THREE

- Find out your special role
- You are the team expert on this topic!
- Decide what to draw on your part of the island that answers the questions on your role card

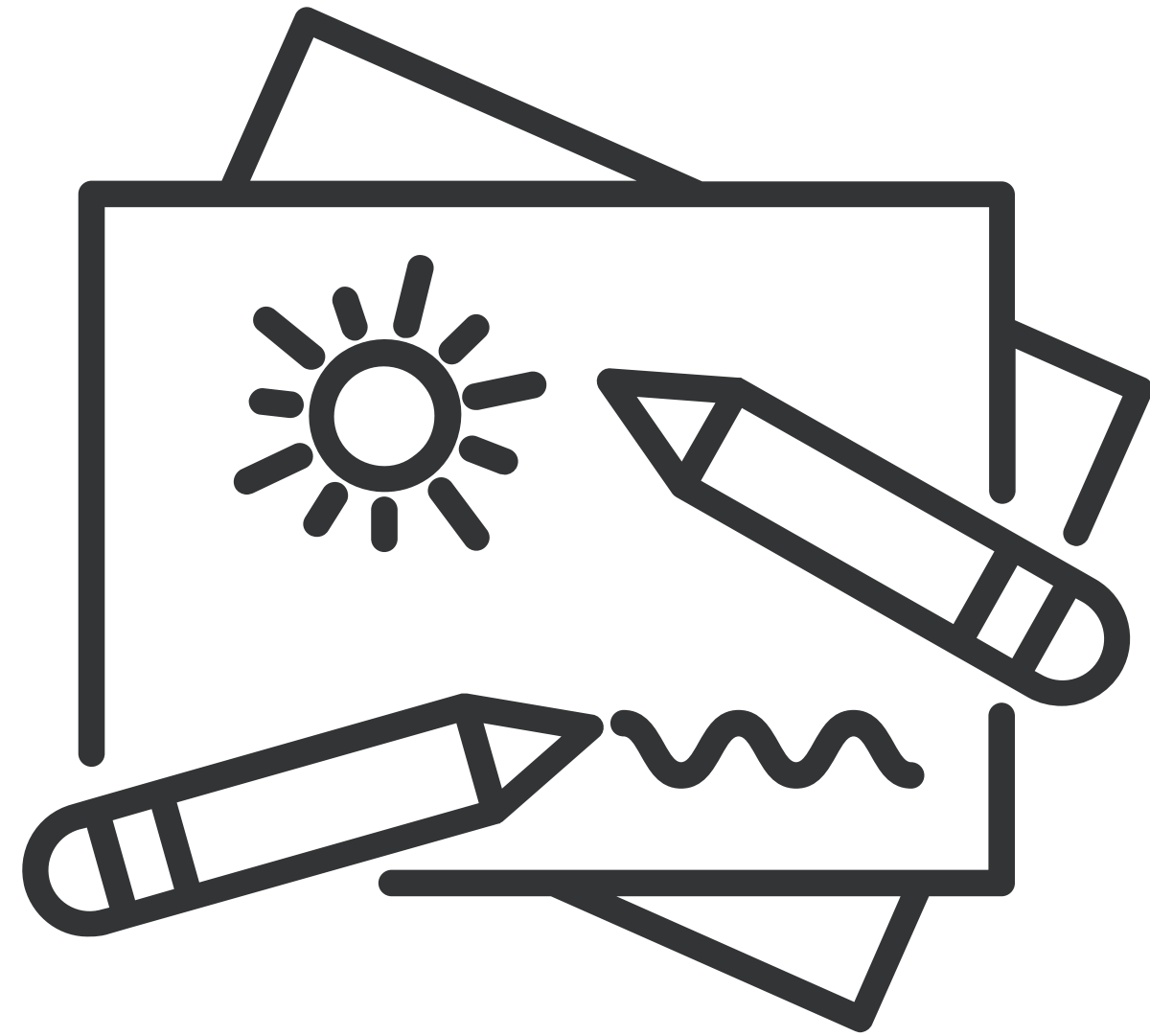




# DESIGNING YOUR ISLAND:

## STEP FOUR

- Draw your part of the island
- Your drawings don't need to be perfect, they just need to explain your ideas!
- Extension: label your island's sustainable features

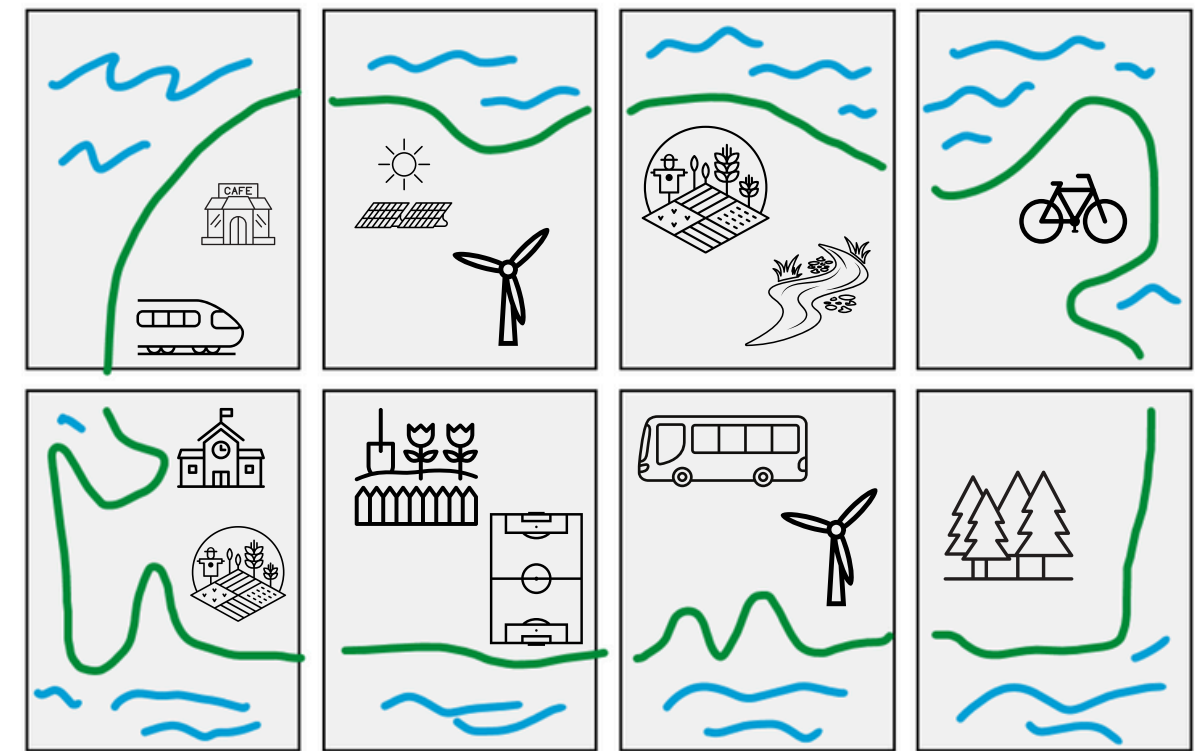




# DESIGNING YOUR ISLAND:

## STEP FIVE

- Join all your team's drawings back up - just like this!
- Tell your team mates all about your part of the island





# REFLECTION

How could we apply some of these sustainable solutions in our own community?

